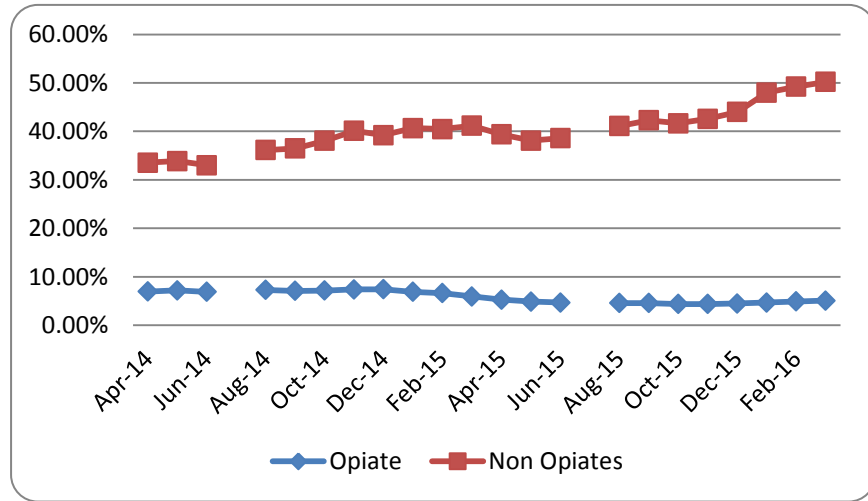


# Drug O.B.A Q4 2015/16 - Reduce the harmful impact of drug misuse on individuals, families and communities.

## 1. Indicators

**1. Increase the proportion of all in treatment, who successfully complete treatment and do not re-present within 6 months**



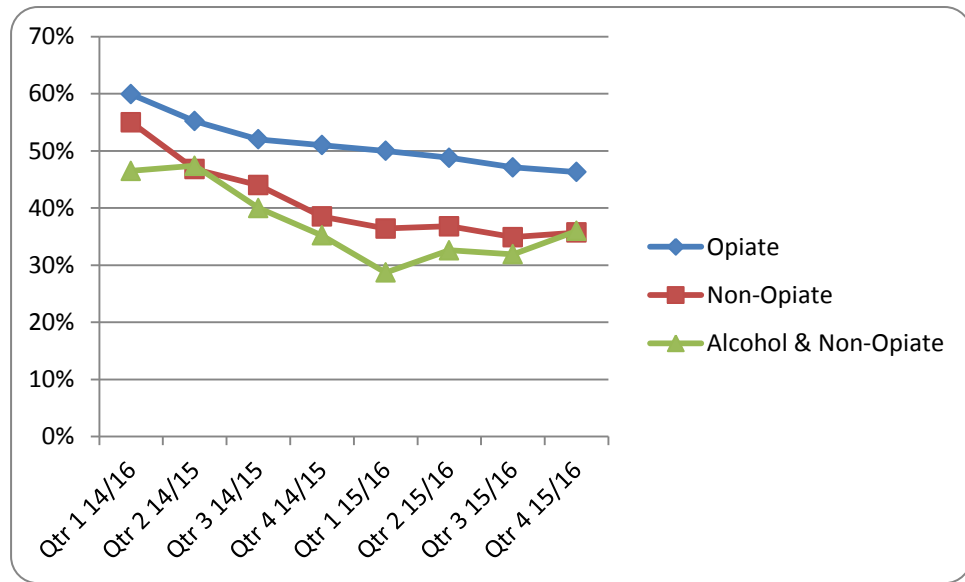
*N.B. (No national data for comparison) NB final data is shown on graph for March 2016*

**2. Reduce drug related offending (reoffending of DRR clients)**

*Data/information to be developed. This data development issue requires further debate to agree the measure, as CRC and police sourced data is potentially available.*

## Drug O.B.A Q4 2015/16 - Reduce the harmful impact of drug misuse on individuals, families and communities.

### 3. Increase the number of clients in treatment who live with children



### Story behind the Baseline

Indicator 1: Performance is slowly improving for the non-opiate group, but opiate users have not improved performance. Some of the reasons why this is, may be due to lack of recovery capital and complex needs of this client group such as aging opiate users who are somewhat 'stuck' in the treatment system. An action plan with number of opiate user discharges needed at a keyworker level has been developed and agreed with the provider.

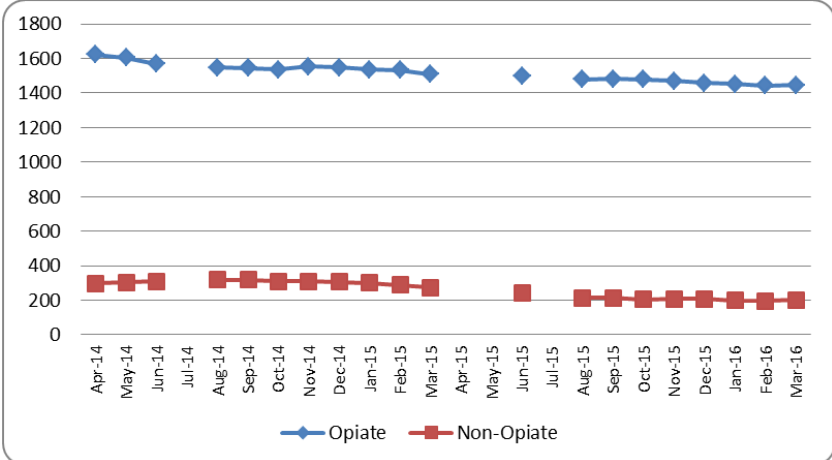
This indicator is linked to 2.5% of the annual contract value (top quartile performance to be achieved)

Indicator 2: awaiting data

Indicator 3: It could be argued that a decrease in number of clients in treatment is preferable. However, due to the protective nature of treatment and support, an increase in number of clients in treatment is still a positive outcome for the families affected.

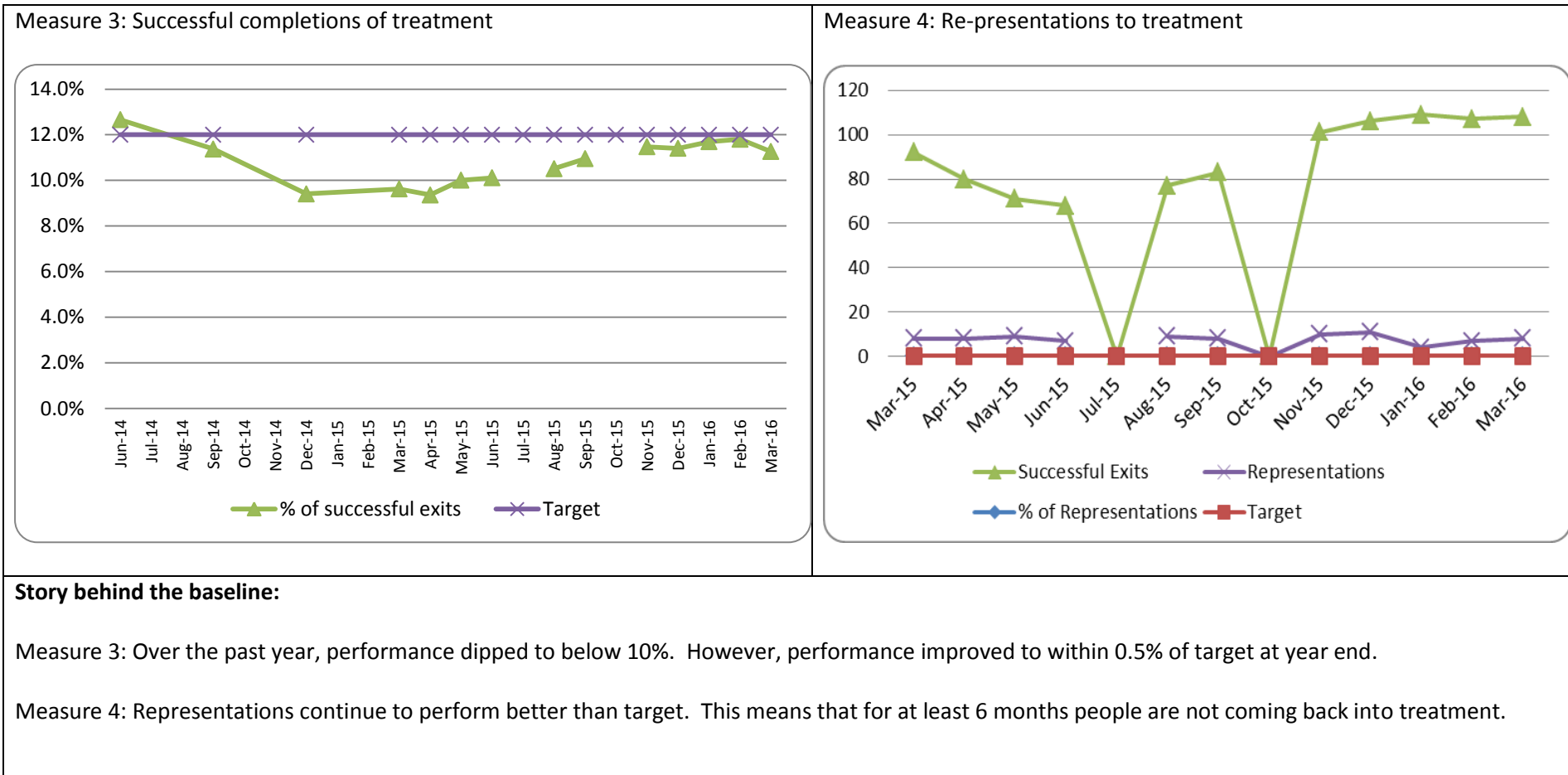
# Drug O.B.A Q4 2015/16 - Reduce the harmful impact of drug misuse on individuals, families and communities.

## 2. Performance measures – how much are we doing

<p><b>Measure 1: Increase Numbers in Treatment</b></p>  <table border="1" style="margin-top: 10px; width: 100%; border-collapse: collapse;"> <caption>Approximate data from Measure 1 chart</caption> <thead> <tr> <th>Month</th> <th>Opiate</th> <th>Non-Opiate</th> </tr> </thead> <tbody> <tr><td>Apr-14</td><td>1650</td><td>300</td></tr> <tr><td>May-14</td><td>1600</td><td>300</td></tr> <tr><td>Jun-14</td><td>1550</td><td>300</td></tr> <tr><td>Jul-14</td><td>1550</td><td>300</td></tr> <tr><td>Aug-14</td><td>1550</td><td>300</td></tr> <tr><td>Sep-14</td><td>1550</td><td>300</td></tr> <tr><td>Oct-14</td><td>1550</td><td>300</td></tr> <tr><td>Nov-14</td><td>1550</td><td>300</td></tr> <tr><td>Dec-14</td><td>1550</td><td>300</td></tr> <tr><td>Jan-15</td><td>1550</td><td>300</td></tr> <tr><td>Feb-15</td><td>1550</td><td>300</td></tr> <tr><td>Mar-15</td><td>1550</td><td>300</td></tr> <tr><td>Apr-15</td><td>1550</td><td>300</td></tr> <tr><td>May-15</td><td>1550</td><td>300</td></tr> <tr><td>Jun-15</td><td>1550</td><td>300</td></tr> <tr><td>Jul-15</td><td>1550</td><td>300</td></tr> <tr><td>Aug-15</td><td>1550</td><td>300</td></tr> <tr><td>Sep-15</td><td>1550</td><td>300</td></tr> <tr><td>Oct-15</td><td>1550</td><td>300</td></tr> <tr><td>Nov-15</td><td>1550</td><td>300</td></tr> <tr><td>Dec-15</td><td>1550</td><td>300</td></tr> <tr><td>Jan-16</td><td>1550</td><td>300</td></tr> <tr><td>Feb-16</td><td>1550</td><td>300</td></tr> <tr><td>Mar-16</td><td>1550</td><td>300</td></tr> </tbody> </table>	Month	Opiate	Non-Opiate	Apr-14	1650	300	May-14	1600	300	Jun-14	1550	300	Jul-14	1550	300	Aug-14	1550	300	Sep-14	1550	300	Oct-14	1550	300	Nov-14	1550	300	Dec-14	1550	300	Jan-15	1550	300	Feb-15	1550	300	Mar-15	1550	300	Apr-15	1550	300	May-15	1550	300	Jun-15	1550	300	Jul-15	1550	300	Aug-15	1550	300	Sep-15	1550	300	Oct-15	1550	300	Nov-15	1550	300	Dec-15	1550	300	Jan-16	1550	300	Feb-16	1550	300	Mar-16	1550	300	<p><b>Measure 2: (Need a measure on drug related crime)</b></p>
Month	Opiate	Non-Opiate																																																																										
Apr-14	1650	300																																																																										
May-14	1600	300																																																																										
Jun-14	1550	300																																																																										
Jul-14	1550	300																																																																										
Aug-14	1550	300																																																																										
Sep-14	1550	300																																																																										
Oct-14	1550	300																																																																										
Nov-14	1550	300																																																																										
Dec-14	1550	300																																																																										
Jan-15	1550	300																																																																										
Feb-15	1550	300																																																																										
Mar-15	1550	300																																																																										
Apr-15	1550	300																																																																										
May-15	1550	300																																																																										
Jun-15	1550	300																																																																										
Jul-15	1550	300																																																																										
Aug-15	1550	300																																																																										
Sep-15	1550	300																																																																										
Oct-15	1550	300																																																																										
Nov-15	1550	300																																																																										
Dec-15	1550	300																																																																										
Jan-16	1550	300																																																																										
Feb-16	1550	300																																																																										
Mar-16	1550	300																																																																										
<p><b>Story behind the baseline:</b></p> <p>Measure 1: Aiming to increase the proportion of non-opiate users into the treatment system relative to the number of opiate users over the 4 year period of the whole system contract. There is national evidence that numbers of younger (i.e. under 25 years) opiate users is falling, and new drug trends are emerging (New Psychoactive Substance, club drugs, Image and Performance Enhancing Drugs, Over The Counter medication). There is an ageing population of opiate users in the treatment system who have complex health needs that need to be met.</p> <p>Measure 2: To raise with SSDP Exec, CRC and Police how this measure can be reported, further discussion needed as the measures are not straightforward.</p>																																																																												

# Drug O.B.A Q4 2015/16 - Reduce the harmful impact of drug misuse on individuals, families and communities.

### 3. Performance measures – how well are we doing it?



# Drug O.B.A Q4 2015/16 - Reduce the harmful impact of drug misuse on individuals, families and communities.

## 4. Performance measures – is anyone better off

